

Friction Washer



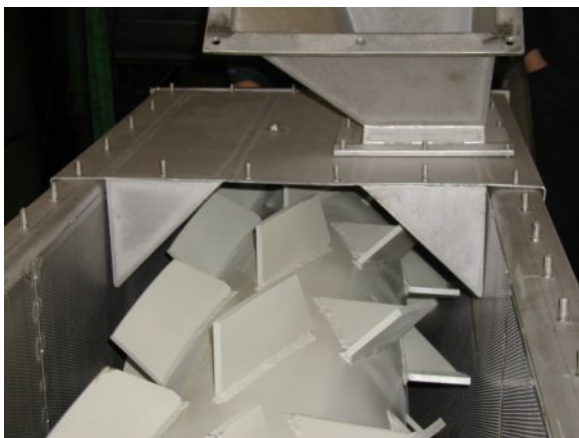
The **NEUE HERBOLD** friction washer type FW 560/3000 is used for water separation and cleaning of regrind, especially film flakes, PET- bottles flakes and other hard plastic materials.



The friction washer is mounted on a zinc-coated frame in inclined position. Drive is provided by a three-phase motor and an oversized V-belt drive.

The rotor of the friction washer transports the material in upward direction. During the transport from the bottom to the top the material is intensively washed. Through the lid of the friction washer it is possible to add additional water straight into the material chamber. This improves the cleaning effect.

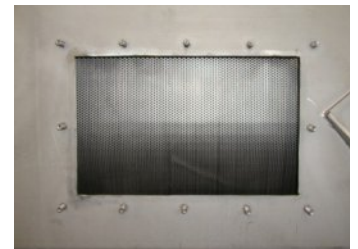
Fines, water and soaked paper are spun off and are pressed through the mesh of the screen cage. The water / fines mixture is gathering on the inner surface of the housing and is discharged through a discharge nozzle.



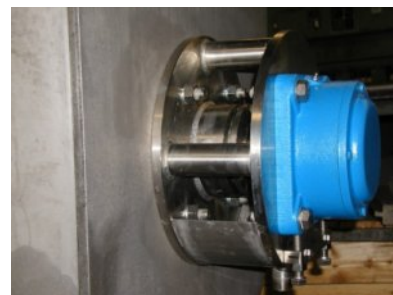
The rotor is made of a thick walled steel pipe with welded-in shaft journals and attached accelerators with additional supports. On request the rotor can be equipped with changeable paddles. The rotor is balanced in accordance to compulsory standards and guarantees an efficient operation.



A number of maintenance openings in the housing wall enable easy cleaning and inspection of the machine.



A gland seal with additional centrifuge disc prevents water and dirt intrusion into the bearings.



Rugged roller bearings assure a long durability. Adjustment bolts ensure easy centering of the entire bearing unit.

Special designs:

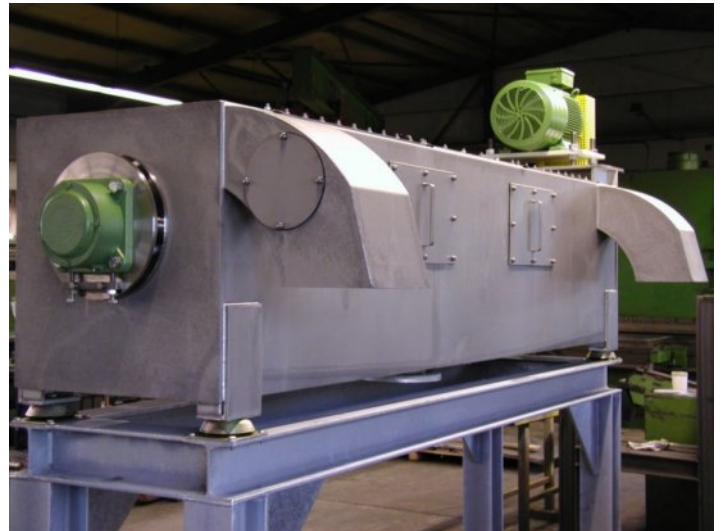
Screwed and exchangeable screen segments



Special housing with maintenance openings



Special designs:



Friktion washer type FA 600/3200 - with central access and double discharge.

